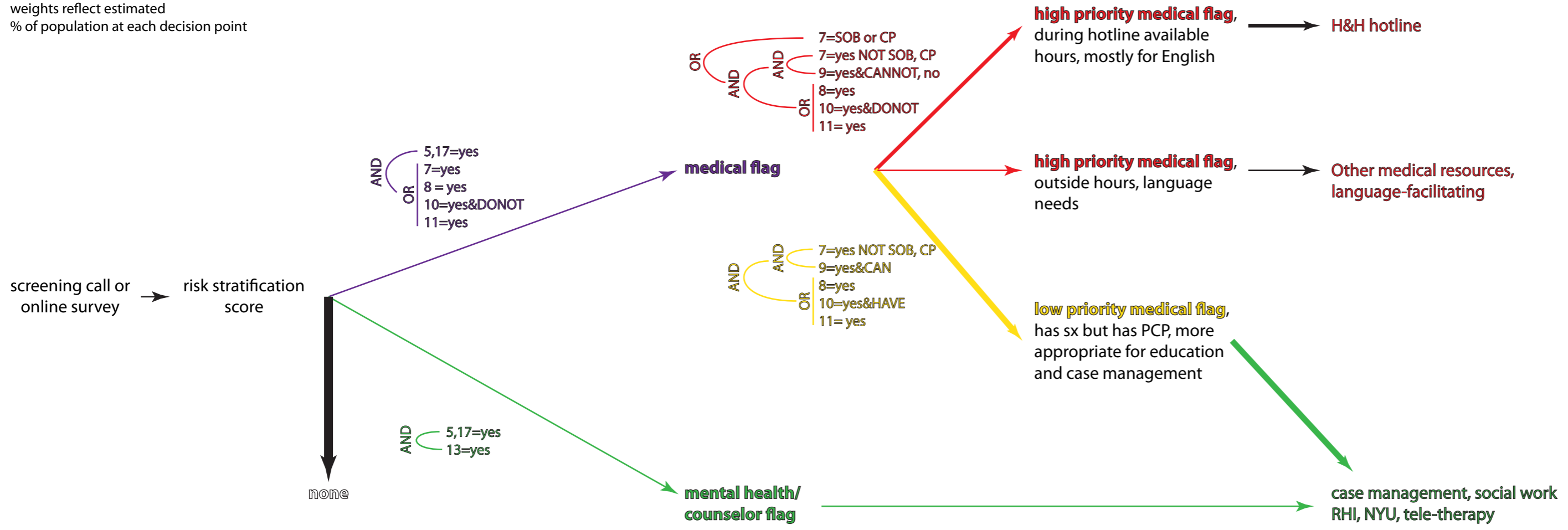


gate on top of score

- Q1: name
- Q2: phone
- Q3: reached?
- Q4: language
- Q5: consent 1
- Q6: age
- Q7: symptoms
- Q8: preexisting condition
- Q9: PCP
- Q10: essential therapy
- Q11: access healthcare
- Q12: disability
- Q13: mental health
- Q14: email
- Q15: address
- Q16: zip code
- Q17: consent 2

→ weights reflect estimated % of population at each decision point



(example ~scores)

risk score	MED gate	SW gate	language
100	high priority		english
90	high priority		english
80	high priority		spanish
70	low priority		chinese
60	low priority		english
50	low priority		english
40	medical flag		spanish
40	medical flag		english
40	medical flag		english
<30			english
<30			chinese
<30			english